



Innovate UK - Accelerated Knowledge Transfer 4 – Addiction Healthcare Goals

(AKT4)

AKT 4 FAQs

This document will be hosted on the following webpage <https://iuk-ktp.org.uk/accelerated-knowledge-transfer/>. The document hosted at this location may be updated throughout the duration of the competition.

This document only relates to the AKT 4 (Addiction Healthcare Goals).

This FAQ document covers the following areas:

- Knowledge Base partner
- Business Partner
- Associate
- Pre-Award guidance
- Post-Award guidance
- General questions

Please refer to the FAQs within this document when considering questions concerning your project.

Please note that Business Partners cannot apply directly for an Innovate UK AKT award.

All applications must be led and submitted by a UK Knowledge Base.

Please review the Competition Scope, Cost Guidance and FAQs for full information around eligibility.

Version: 4.1
Date: 09/05/2025



KNOWLEDGE BASE PARTNER

Which Knowledge Bases are eligible to apply for Innovate UK - AKT?

Any Knowledge Base that is eligible to apply as a Knowledge Base for KTP is eligible to apply in this competition. You will find a list of Knowledge Bases already approved to participate in KTP here: <https://iuk-ktp.org.uk/find-your-local-knowledge-base/>

If you are not already approved as a Knowledge Base to participate in KTP, you will still be eligible to apply for an Innovate UK AKT award. You must be a UK registered [higher education](#) (HE) or [further education](#) (FE) institution, [Research Technology Organisation \(RTO\)](#) or [Catapult](#). Please follow the links for further information.

What cost model must be used by the Knowledge Base in applying for an Innovate UK - AKT grant?

Knowledge Bases must carefully review and follow the AKT4 Cost Guidance (available [here](#)) when applying for this competition, please ensure that you refer to the correct guidance for the AKT round that you are participating in. Where the Knowledge Base institution uses FEC, they will be required to attach an up-to-date FEC letter with their application. This must be valid on the date of the competition Funders Panel. Non-FEC Knowledge Bases must upload an exemption certificate, which can be found on the AKT Webpage: <https://iuk-ktp.org.uk/accelerated-knowledge-transfer/>

Can the Knowledge Base cost in more than One Academic Supervisor?

Typically, it is expected that only 1 academic will be supported via the grant.

Can one Knowledge Base Supervisor be present in two applications?

Yes, however, this will be a matter for the Knowledge Base institution. NB. Involvement of a single Knowledge Base Supervisor in 2 Innovate UK AKT projects would require a minimum of 0.5 days per week (i.e. 0.25 days per project per week).

Can the Knowledge Base Supervisor allocate more time to the project?

Version: 4.1
Date: 09/05/2025



Academic supervision will typically be delivered at 0.5 days per week, with a minimum of 0.25 days per week. Any additional supervision time will need to be justified in the application and must represent the best means of delivering the project.

Can a Knowledge Base apply for more than one Innovate UK - AKT grant?

Yes, within reason. However, applicants must explain how they will be able to effectively deliver multiple projects. Must we receive a higher volume of applications than capacity, we may take the number of applications from each knowledge base into consideration. There is no limit to the number of projects that a Knowledge Base has active; Knowledge bases must consider their time and academic availability to support their AKT Portfolio.

What criteria are there for the Supervisor? Do they have to be an academic member of academic?

The Knowledge Base must be content that the Academic Supervisor has the requisite knowledge, experience, and capability to supervise the project. They need not necessarily be academic staff but must be employed by the knowledge base.



BUSINESS PARTNER

What Business Partner organisations are eligible to partner in an Innovate UK - AKT project?

Please see the Call Guidance documentation where eligibility is defined. Note that there are no upper limit restrictions on the size of the Business Partner.

What exactly do you mean by Business Partner?

We use the term 'Business Partner' for businesses, public sector organisations, charities or charitable businesses. They must be registered in the UK. Please see the Competition Brief (IFS Competition Page) for further guidance.

For the purpose of this AKT (R4), NHS Treatment providers, or third/voluntary sector led treatment providers can count as the Business Partner. Where a single provider operates multiple treatment delivery settings UK wide, each setting can operate as a different Business Partner

Can a Business Partner be involved in more than one Innovate UK - AKT project?

Yes, within reason, however, applicants must explain how they will be able to effectively deliver multiple projects. A Business Partner can have a maximum of 4 AKT projects active at any time.

If the Business Partner was supported through a project in previous AKT Rounds, are they eligible to apply again?

Yes, this is a stand-alone competition, so long as this is a new project, they will be eligible to apply.



Can Business Partners with an existing live KTP apply?

Yes - however the Innovate UK - AKT team will need to be convinced that the company has the capacity to support any activity additional to the KTP project.

What financial contribution is made by the Business Partner?

The Business Partner must commit to a minimum 10% contribution to the total project costs, which must be in cash. Additionally, they must provide resources to cover their own costs and any additional project costs over £35,000. The Knowledge Base is responsible for recovering the 10% contribution and any other costs from the business partner. There are no exceptions for third-sector, charities or charitable organisations.

Can a public sector body such as the NHS be a partner?

For AKT4, public sector organisations are eligible as Business Partner. Within the NHS, where the maximum of 4 project rule applies, we will treat each Trust as a separate organisation, this rule applies across other public sector organisations that cover the UK.

What other contribution is the business partner expected to make?

The Business Partner must dedicate its own staff and necessary resources to facilitate the Innovate UK AKT project and work in partnership with the Knowledge Base institution and the associate. The exact nature of these arrangements will need to be discussed and agreed by the project partners before the application is submitted. The Innovate UK - AKT grant does not support any costs incurred by the Business Partner during delivery of the project.

Can 2 SMEs apply jointly for the project?

No. Innovate UK - AKT is restricted to one Knowledge Base working with one Business Partner. Additional partners could be associated with and support the project team as a third parties, as outlined earlier in this document.



Can a business use a grant acquired from elsewhere as their match contribution?

No. Public money cannot be used to match Innovate UK - AKT funding. Charitable organisations must use unrestricted funds for match funding.

Is there any flexibility around the requirement for the Business Partner to have 4 FTE's?

We believe that a Business Partner with 4FTE's will be better able to contribute to and support the project.

Regarding 4 FTE's, what if the business has contracted workers working full-time on the business, not actually employees?

The Business Partner must have a minimum of 4 FTEs in its employment.

Can start-ups use the funding to explore an opportunity before looking into a full project?

Yes, so long as they meet the eligibility requirements outlined in this document and the Competition Guidance.

Can UK based Charities apply where the impact will be delivered overseas?

Impact must be delivered within the UK, however projects are welcome to set out how the work could be important on a wider global scale as well.

Would a small treatment delivery provider, qualify as a Knowledge Base or a Business Partner for the purpose of the AKT?

Both NHS and third/voluntary sector treatment providers would qualify as Business Partners in an AKT application. Both would need to partner with a qualifying Knowledge Base (UK university or other registered research organisation), who would lead the AKT application.

Version: 4.1

Date: 09/05/2025



If a small treatment delivery service, with limited budget to use for additional projects wanted to get involved but couldn't afford the 10% contribution, how could they engage with the scheme?

An option would be to become a third party in an AKT project led by a Knowledge Base, partnering with a company who would act as the Business Partner, (making the 10% cash contribution). The treatment service could be an additional partner to the project, for example helping to provide access to people in services.



ASSOCIATE

Can the associate be part-time?

The associate can be part-time, however, this can only be set to 0.5FTE. Additionally, up to two associates can work on the project at 0.5 FTE each, up to a maximum of 1 FTE in total.

What is classed as 1FTE?

This depends on the standard working hours of the Knowledge Base, (often between 35 and 42 hours per week). This will determine the working hours equating to 1 FTE for the associate.

Does the associate have to spend time at the Business Partner's premises?

It is expected that the project team (all partners, as defined in the application form) will meet at least every two weeks. Ideally, these meetings must occur at both the Knowledge Base and the Business Partner premises, but they can also take place remotely. The associate spending time at the Business Partner premises is desirable, but not mandatory.

Do you have to name the associate on the application?

This is not a requirement with this competition. The associate profile must be outlined in the application, but it is not essential that they are named. Associates must be employed by the Knowledge Base and be suitably skilled to deliver the project. All of the partners must be content with the associate(s) selected to deliver the project. Note that the associate(s) must be available to start project delivery within 6-weeks from the date of issue of the GoL.

Does the associate have to be based in the UK?

The Associate will need to be in the UK and will be employed by the Knowledge Base Partner.



Can we build in Visa costs for the associate?

Visa costs are not an eligible cost in this competition. It is unlikely that a visa would be obtained for a short project such as this, nor that it could be obtained quickly enough to enable a project to start within 6-weeks from the Grant Offer Letter issue.

Can the associate already work for the business?

An associate from the business would be ineligible, as the Business Partner must cover their own costs. Associates can not be seconded from the Business Partner to the Knowledge Base partner.

Can a KTP associate who is already working for the Business Partner be the associate on an Innovate UK - AKT project?

The KTP associate role is a full-time position so they cannot participate in a KTP project and an Innovate UK - AKT project at the same time. However, if an Innovate UK - AKT project starts as the KTP contract comes to an end then the KTP associate could potentially segway directly into an Innovate UK - AKT project, provided the Knowledge Base HR processes allow for this.

Can an Innovate UK - AKT associate become a KTP associate?

Not directly, but a successful AKT associate would be welcome to apply for any relevant KTP associate role. Knowledge Bases are reminded that a demonstrably open and fair recruitment process is required under the terms of a KTP grant.

Can we use a student to deliver part of the Innovate UK – AKT role?

Yes, provided there is a mechanism for them to be employed/paid by the Knowledge Base and they can be recruited within the Knowledge Base's HR processes. However, this must be treated with caution to ensure that the person in post has the necessary time to undertake the role. For example, a part time student, may be able to work part-time in a 0.5 FTE associate role.

Are there any eligibility criteria for the associate?



The associate must be employed by the Knowledge Base on a temporary or permanent basis during the lifetime of the project. The associate must be appropriately skilled to deliver the project. The minimum requirement is a Level 5 qualification (or equivalent qualification) or relevant significant experience. Recent graduates, master's students, PhD candidates, post docs, lab technicians, research assistants and early career researchers are all potential Innovate UK - AKT associates.

Can someone who has already been an Innovate UK – AKT associate do so again, i.e., if they were employed on a project during a previous AKT round?

Yes, this is fine.

Can the company find the associate or does this need to be the Knowledge Base?

The associate must be employed by the Knowledge Base partner. It is expected that applicants will be interviewed by the Knowledge Base and the Business Partner, who must both agree to the appointment of the selected candidate.

Could an academic act as an associate?

Yes, as long as the available grant (maximum of £35,000) will 'buy' enough time for the academic to deliver the project. Note that the associate and the Supervisor cannot be the same person.

Could an associate be home-based or in a hybrid work arrangement?

Yes, however, this must be made to be clear in the application and, in particular, the provisions for maintaining good communication between the project team must be described.

Version: 4.1
Date: 09/05/2025



PRE-AWARD GUIDANCE

Will the applications be made through IFS?

Yes, all applications must be submitted via IFS.

Is there guidance and advice on project costing?

Please carefully review the Innovate UK – AKT4 Costing Guidance document, which will be posted [here](#), in advance of the competition opening.

Do we need an IP agreement?

It is not anticipated that IP will be generated within an Innovate UK - AKT project, however, if either party wishes to put an IP agreement in place, it must be in place before the application is submitted.

Is there a document similar to a Joint Commitment Statement for AKT?

A separate JCS is not required for Innovate UK – AKT applications. However, in submitting applications, applicants will be required to work together as a partnership and to deliver on the commitments made in the application around partnership working.

How will applications be assessed?

Please review the competition briefing webinar for more information around how applications will be assessed. The recording is available on the [AKT webpage](#).

How quickly will we be notified if our application is successful?

We anticipate issuing Grant Offer Letters by the end of September 2025 or sooner.

Version: 4.1

Date: 09/05/2025



Can we build in costs for equipment hire?

The hiring of equipment is allowable under the consumables budget.

Are international Travel Costs Eligible?

International travel costs are not eligible.

Software is not an eligible cost, how about cloud services?

Cloud services are not an eligible cost.



POST-AWARD GUIDANCE

Once we receive the Grant Offer Letter (GOL) how soon must the project start?

The project must start as soon as is practicable and must start within 6-weeks from the receipt of the grant offer letter. Project set-up and GOLs will be managed by Innovate UK in IFS. Schedule 1 acceptance of the grant offer must be submitted within IFS.

The project start date and the appointment of the associate must be notified via the Knowledge Base in the Innovate UK Business Connect - AKT Competition Portal (Good Grants).

Do we need to provide Innovate UK with the names of the associates working on the project?

On or before the first day of your project, you will be required to submit the associate(s) name(s) and the project start date on the Innovate UK Business Connect - AKT Competition Portal (Good Grants).

If one or more associates is no longer available to complete the project, you must contact the designated AKT Monitoring Officer to discuss with the Knowledge base the impact this will have on the project and if it must continue. You must also contact the AKT Competition Team via email akt@iukbc.org.uk and confirm the dates that they left the project.

If an associate is replaced, contact the AKT Competition Team via email akt@iukbc.org.uk to action the replacement associate task, and provide the name of the agreed replacement associate(s), submitted to the AKT Competition Portal (Good Grants), along with their start and expected end date working on the project. You will be required to confirm that the Business Partner is content with the choice of associate(s).

Can we substitute an associate during the project?

The expectation is that the associate will deliver the entirety of the project. If an associate is no longer available to deliver the entirety of the project, the project partners must select an alternative associate(s) that they are agreed upon. If an agreed suitable substitute cannot be found, the project will be terminated.



Will there be an opportunity to request virements or project changes?

There will be only a very limited opportunity to request virements or budget revisions in this competition. Virements will be limited to requests to move funds between Travel & Subsistence and Consumables and Estates cost categories. These must be requested in IFS via a Project Change Request (PCR), in order to ensure that the change is approved as an eligible cost.

How will projects be monitored?

Requirements around project monitoring will be clarified in the Grant Offer Letter, however, we anticipate a project start, mid-point and final project review will be required. Reporting will be undertaken on the Innovate UK Business Connect - AKT competition portal (Good Grants).

What do I need to do if the project is disrupted or ends early?

If your project is significantly disrupted, such as withdrawing after the grant has been accepted, finishing early, or an Associate needs to be replaced, this must be communicated to the AKT Competition Team via email to akt@iukbc.org.uk.

How will Claims be paid?

Claims must be submitted according to the terms of the GoL following the end of the project. Final finance claims will be submitted via IFS. Claims will not be processed and approved unless a final report, case study and a presentation as set out in the GoL has been completed and approved by the AKT Monitoring Officer. The latter will be submitted on the Innovate UK Business Connect - AKT Competition Portal (Good Grants).

Innovate UK will process finance claims, and Innovate UK Business Connect will process final reports.

NB. The Knowledge Base partner is expected to recover the Business Partner contribution. Invoices for payment must be raised by the Knowledge Base at a time agreed with the Business Partner and prior to the submission of the final claim.



Can we request that the project is paused and or extended for any reason, for example, to allow an associate to be replaced?

Projects are thirteen weeks in duration only. The project start must be within six weeks of the Grant Offer Letter being issued. There will be no extensions to the latest project start date contained within the GoL.

During the project, if there is an issue that is preventing the project being delivered such as Associate sickness or that the Associate needs to be replaced, you must raise this with the AKT Competition Team via email akt@iukbc.org.uk. On review of the issue and impact to the project, you may be entitled to a maximum 2-week pause and extension to the project. This extension would be uncoded, with no eligible costs to be incurred during the pause period.

If the issue relates to sickness of the Associate, whilst sick leave is an entitled cost in AKT, if the project is extended, you will not be able to claim employment costs in the extended period. You may choose to claim either the costs within the paused period for sick leave, or the worked period in the extension, but not both.

What happens if we can't start within 6-weeks of receiving the Grant Offer Letter?

Your funding will be withdrawn.



GENERAL QUESTIONS

Will there be more than 1 round with this competition?

At this stage, the April 2025 competition is a stand-alone competition. There are no plans for a further round. Any future competitions will be publicised through the normal channels.

What is the duration of the project?

Projects in AKT4 are defined as 3-months only, this is based on 13 weeks. When calculating costs, ensure that your cost calculations are pro-rated for this duration.

What is the total value of the grant awarded?

The maximum grant that will be awarded will be £35,000. The minimum 10% Business Partner contribution is in addition to this.

For example:

90% Grant (£35,000) + 10% Contribution (£3,888.88) = Total project costs (£38,888.88)

Will the local KTA support the application development?

Applications must be submitted directly. KTAs will not support Innovate UK - AKT applications, and they are not required to review these pre-submission.

Are there any limits on the scope of projects in this round of AKT?

For AKT Round 4, the focus will be addictions healthcare, and the competition will support projects that explore questions linked to the treatment of, recovery from, and reduction or prevention of harm by addictions or dependence to substances treated in a typical treatment service in the UK.

Please refer to the full Competition Scope (available [here](#)), before considering your application). In general AKT projects have to be innovative and have the potential to deliver



value to the Business Partners. Impacts may be a mix of commercial, societal, environmental and health/well-being.

Who is responsible for recovering the Business Partner contribution?

The Knowledge Base will be responsible for recovering the Business Partner contribution.

What are the expected final reporting requirements of an Innovate UK - AKT project?

At the end of the project as a minimum we expect to receive:

- A short report outlining the project activities and outcomes.
- A PowerPoint presentation given by the associate to the Business Partner summarising the reports content.
- A case study for publication.

Will final report templates be available pre-project so that the project team can work towards completion from an early stage?

Successful applicants will be given guidance regarding the content of final reports.

What Technology Readiness (TRL) level is this competition aimed at?

Innovate UK - AKT is about evaluating an innovation project or concept for the Business Partner, so TRL levels are not directly applicable. Projects will ideally exploit existing knowledge within the Knowledge Base, so must not be used where the likely outcomes for the project are solely research-based.

What happens if the idea behind the project turns out to be a bad idea?

‘Failing Fast’ is a successful outcome for these projects. The value of such outcomes must be discussed in the final report.

Version: 4.1

Date: 09/05/2025



Are Business Schools eligible to apply as the Knowledge Base Partner?

Yes - there are no restrictions on the eligibility of academic discipline accessed through this scheme.

What is the maximum associate salary that can be claimed?

There is no limit to associate salary as such. The maximum grant that can be awarded is £35,000 and the money must be allocated to provide sufficient support to deliver what is outlined in the application.

Version: 4.1

Date: 09/05/2025



Further information:

Please read the Competition brief, Competition Scope and Costing Guidance Documents thoroughly and review the Competition Briefing Webinar before emailing us with your query.

All competition details, guidance, and webinar can be found on:

<https://iuk-ktp.org.uk/accelerated-knowledge-transfer/>

If, following review of the above information, you still have an unresolved query, please contact us at: akt@iukbc.org.uk



AKT 4 Briefing Webinar Slides



Innovate UK - Accelerated Knowledge Transfer 4 (AKT4) - Addiction Healthcare Goals

Applicant Briefing
Pre-recorded

Agenda

1. AKT Programme
2. Eligibility
3. Competition Scope
4. Competition Details
5. Application process
6. Assessment
7. What happens next





AKT Overview

A UK **Knowledge Base** will work with a UK registered Business Partner, to deliver a **rapid** and **targeted intervention** to accelerate the evaluation or development of an innovation project or concept, which has the potential for **significant impact** for the **Business Partner**.



Accelerating Innovation

KTP is ideal for businesses with a clear strategic challenge. But for many, the real challenge is identifying their barriers to being truly innovative and knowing how to overcome them.

For these businesses, a shorter-term, rapid intervention can be the solution. Innovate UK Accelerated Knowledge Transfer was launched to create these intensive collaborations that impart knowledge and help businesses to:

- identify innovation blockers
- evaluate an innovation concept
- find solutions to immediate and long-term challenges
- accelerate new thinking and processes
- develop new business models and expand capacity





Scheme Overview

- Projects are 3 months in duration
- Knowledge Base will be the applicant and sole grant recipient
- Maximum grant of £35k
- Minimum additional Business Partner contribution of 10% in cash
(e.g. £30k total project cost = £27k grant + £3k Business Partner contribution)



Who can participate in this scheme?

Lead applicant must be a UK Knowledge Base
(that is eligible to participate in the KTP Programme)

Must partner with a UK registered Business Partner, charity or charitable company
(see definition in call document)





About the Business Partner

The business partner must:

- be a UK registered business, charity, or charitable company
- have the ability and capacity to exploit outcomes from the project
- demonstrate to the KB partner they have sufficient funds to support their contributions to the project and make a declaration on the application form to that effect
- employ a minimum of 4 FTEs



Grant Costs: Employment (required)

Associate Employment Costs, of 0.5 - 1 FTE of 'Associate' capacity to deliver the project

(Role can be shared between up to two individuals 0.5FTE or one individual 0.5FTE or 1FTE)

This covers the full employment costs of the associate/(s), if the Associate will be based at the business, no indirect/overhead costs can be incurred.

Knowledge Base Supervision Employment Costs

(Typically 0.5 days per week (minimum of 0.25 days))

This covers the full employment costs of the Supervisor and indirect overhead either calculated through FEC or non-FEC





Grant Costs: Associate Development (required)

Associate Development Costs: The maximum associate development costs are up to £50/month (for example, a 3-month project will have a maximum amount of £150)

Should be used to enhance Associates capability to undertake the project, such as:

- Short courses, such as online course
- 1 Conference or event
- Monthly subscription to relevant learning platform (annual subscriptions are not valid)



Grant Costs: Travel, Consumables and Estates (optional)

Up to £3,500 of the project costs can be used to pay for travel, consumables & estate costs

(There is no limit, however, combined these MUST not exceed £3,500, **any changes within these categories must be done through a project change request (PCR)**, additional costs must be met by additional business partner contributions)

- Travel & Subsistence are only eligible for the Associate and Knowledge Base Supervisor travel for project meetings
- Consumables must be significantly transformed or no longer exist after the project to be eligible
- Estate Costs can be used for specialist Lab facilities only.



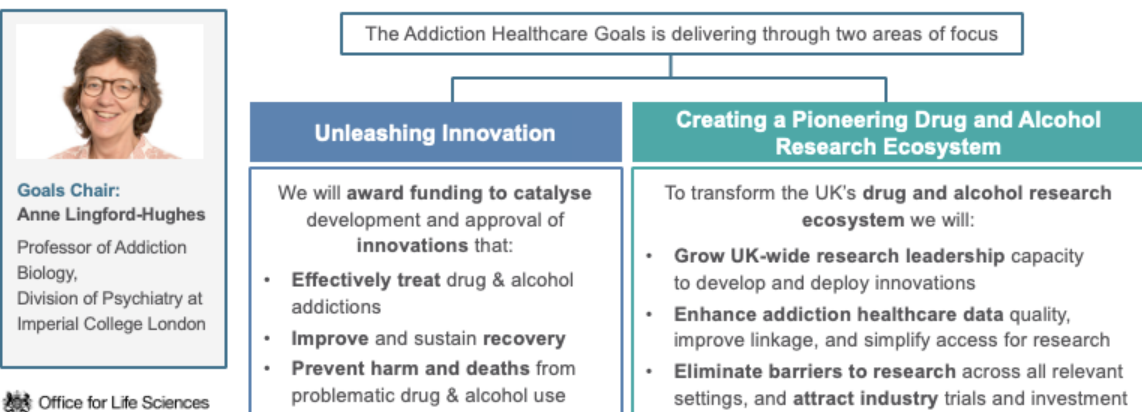
Grant Costs: Additional Associate Support

Knowledge Base Overheads - calculated using FEC or Non-FEC

Refer to AKT 4 Cost Guidance for how to calculate these costs, and how they can be included within your application form

Overview: The Addiction Healthcare Goals

Objective: The Addiction Healthcare Goals aims to make the UK a place where researchers and industry in drug & alcohol addiction healthcare can thrive and partner effectively with NHS and Third Sector treatment providers to design, research, and deploy innovative treatments and technologies to effectively tackle the challenges of these addictions, saving and improving the lives of those affected, and reducing the harms to the individual, their family and friends, and wider society.



Addiction Healthcare Goals: Programmes to Date

Innovation Competitions



Accelerate Innovation



Increase industry involvement



Improve outcomes



Support UK based R&D

Digital Therapeutics | MedTech & AI | Novel Pharmaceuticals

£5m Reducing Drug Deaths



To catalyse development of innovations to improve detection of, response to, and intervention in drug overdose events

£10m Innovation for Treatment and Recovery



To support creation of innovative tools for treatment of, and recovery from opioid or cocaine addictions, with focus on co-occurring mental ill health and polydrug use

 Office for Life Sciences

Research Training Opportunities



Partnered with the Mental Health Incubator to provide opportunities for addiction researchers to develop their career and collaborations and to promote research into co-occurring mental health illnesses and addiction

JLA Priority Setting Partnership



Identifying **Top 10 unanswered research questions** from those with lived or shared experience and healthcare professionals

Will inform future targets for research funding

Addiction Innovations Horizon Scan



Horizon scan of emerging global pharmaceutical, MedTech and psychedelic treatment and recovery innovations

Will be used to identify future innovations to meet UK treatment priorities

Addiction Healthcare Goals – AKT

Focus

This AKT will fund projects focused on **improving treatment, recovery, and harm reduction/prevention for people with drug and/or alcohol addiction(s)**

Call Objectives

Through this AKT call we aim to:

- Foster new partnerships between academia, industry and treatment providers
- Support projects across all UK countries and regions
- Promote growth of new researchers in the field
- Enable more research within Third Sector treatment services, and across the criminal justice system

Applications should aim to...

Target **unmet needs**, including those highlighted in:

- The UK's Drug Strategy, from Harm to Hope (2021)
- Dame Carol Black's Review of Drugs
- Wider UK drug and alcohol strategies
- Specific local priorities and needs

Where possible:

- Be designed in consultation with people with lived experience of addictions
- Account for complex needs (e.g. mental health, housing, criminal justice)
- Demonstrate alignment to delivery of relevant **UK Government missions**

Substances in scope include:

Those treated in typical services e.g.

- Alcohol
- Opioids (illicit and prescription)
- Stimulants (e.g. cocaine/crack, amphetamine, and 'meth')
- Cannabis
- GHB
- Ketamine
- Benzodiazepines
- Gabapentinoids

Out of scope

- Tobacco/nicotine addiction
- Gambling & behavioural addictions
- Prevention of initiation of use
- Early intervention prior to addiction

 Office for Life Sciences

 **Innovate
UK**

Addiction Healthcare Goals – AKT

Example Project Topics:

Project topics which are in scope for funding include, but are not limited to:

- Scoping, designing or deployment of new or improved treatment options, recovery options, or innovative harm prevention approaches (including overdose).
- Exploring approaches to enhance awareness and openness of people with lived and living experience to use of new technologies, treatments, and approaches.
- Piloting approaches to improve researcher access to treatment and recovery services and settings.
- Investigating barriers and devising solutions to roll out of new treatments and technologies by service providers.
- Devising methods for improving treatment data collection, processing or availability for research.
- Improving pathways linking substance use treatment and recovery services to mental health and physical health treatment, and to wider social, criminal justice and other relevant systems.
- Developing optimal methods to engage people with lived and living experience in research and/or treatment pathway design.

Competition Details

Timeline	Dates
Application Briefing	Monday 7 April 2025
Competition Opens	Monday 12 May 2025
Submission Deadline	11am prompt, Wednesday 2 July 2025
Applicants Informed	Thursday 4 September 2025
Post-Award Workshop	Monday 29 September 2025



Key Information

- Maximum 4 projects per Business Partner
- Public Sector Organisations: NHS, Police, etc – each Trust is deemed a separate organisation
- Applications are for two partners, the Knowledge Base and the Business Partner, the organisation who will benefit from the project. Third-party organisations may be engaged in the project to help exploit results, however, are not deemed as a delivery partner within the application or grant award



Who needs to contribute

- The lead applicant – UK Knowledge Base is required to complete and submit the application
- The application should be developed in collaboration with the Business Partner
- The Business Partner will be required to complete a finance declaration as part of the application
- The project monitoring officer for all applications is **Lucia Vinolo Locubiche**, and must be invited as part of the application process





Key Application Questions

We will ask you about:

- The Project Plan
- Project Management
- The Project Team
- Project Funding

No detailed workplan is required, however, a summary of the key project stages is required, along with an approximate timeline.



Application Assessment

Assessment Process:

- Three assessors
- Written feedback will not be provided

Application Assessment:

- Innovation
- Challenges and Risks
- Need for Business Academic Partnership
- Project Outcomes





Application Assessment

Innovation

- What are the needs driving the innovation?
- How the project align to an internal need and/or external 'market'?
- What opportunities will be realised if the solution is successfully deployed?



Application Assessment

Challenges and Risks

- What are the challenges and risks associated with delivery?
- Has the acceptance, or non-acceptance, of the innovation (either internally or externally) been considered?
- Are there any IP related challenges or risks?





Application Assessment

Need for Business-Academic Partnership

- What skills, expertise, knowledge or capability does the business need to realise value from the innovation, and to what extent will the funding accelerate or enable the project?
- What skills, expertise, knowledge or capability do the academic(s) have that will support the development of the innovation?
- What options have been considered to continue the collaboration post-project?

This may be covered by one or more questions in the application



Application Assessment

Project Outcomes

- What is the potential for additional environmental, societal and well-being impacts/benefits?
- What are the post-project actions and investments that may be necessary by the business to extract optimum value from the innovation?
- If the development of the innovation was successful, what is the potential internal and/or external direct/indirect commercial impact?





What happens next

Outcomes

- Notifications
 - Successful – Grant offer Letter
 - Unsuccessful – Information about other opportunities such as Innovate UK Products and Services or guidance from Business Connect KTM's



Project set up

- IFS
 - Financial Information
- Good Grants
 - Start Date & Associate Details

Post-Award

- Good Grants
 - Project Start – check-in
 - Mid-project check in
 - Final Report, Case Study
- IFS
 - Final Financial Claim

**Thank you for your time, please
read the Competition Scope**

<https://iuk-ktp.org.uk/accelerated-knowledge-transfer/>

AKT@iukbc.org.uk

[@ktn_ktp](#)

Twitter: [@InnovateUK](#)

Facebook: Innovate UK

YouTube: Innovate UK